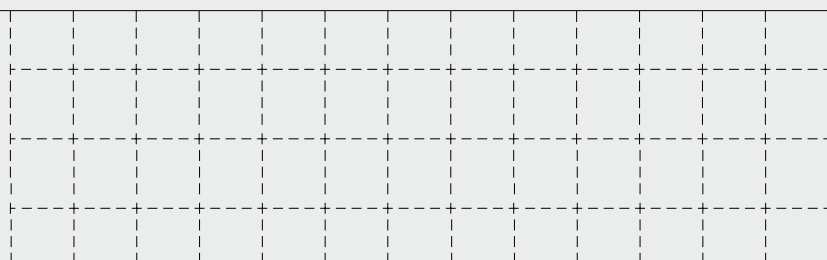




GLOMAR SUPPORTER

Multipurpose Survey Vessel DP2

 **Beam**
Automating offshore wind



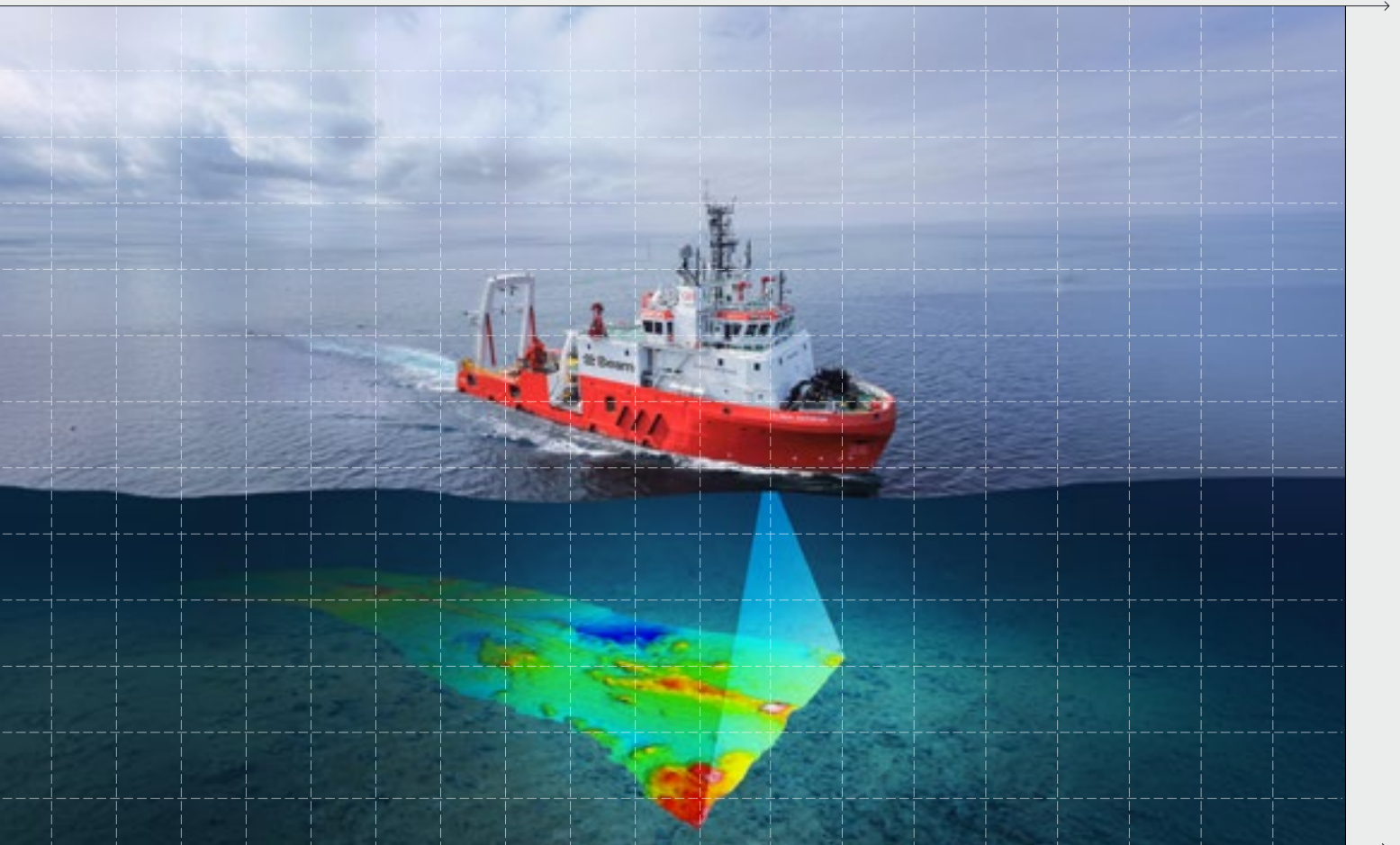
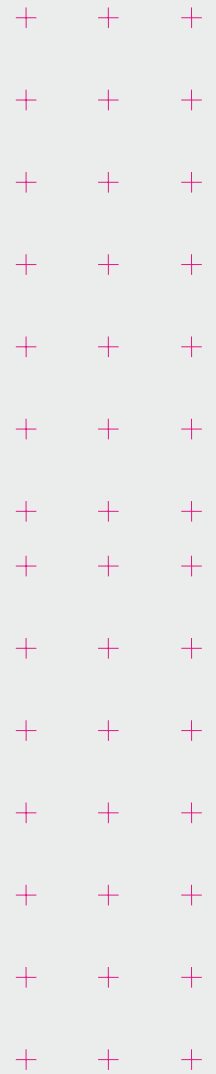
✉ sales@beam.global



Versatile DP2 Survey Vessel for Industry-Leading Data Capture and Offshore Efficiency.

The Glomar Supporter, our dedicated DP2 survey vessel, has a proven track record of safe and efficient operations, and has been meticulously designed to deliver a versatile and superior quality spread for consistent, industry-leading data capture and reporting. Differentiated by technology and equipment, the vessel offers synergistic working and flexibility of sensor deployment. With a USV onboard, it is equipped to deliver simultaneous data collection with instant upload to the vessel, as well as a survey class ROV for concurrent inspection activities.

The vessel has recently been modernised and now provides leading-class accommodation and facilities. With DP2 station keeping capabilities, an overall length of 60 metres, 15.6 metres width and a draft of 3.5 metres, this is the ideal ship to deliver on a complete package of survey solutions, bringing unparalleled efficiency and benefits to your offshore operations.





General

TYPE	Multi-Purpose vessel / DP2
CLASS	Rina
FLAG	Panama
REBUILT	2006 / 2021
CALL SIGN	HOAL
IMO	9394301
MMSI	374689000
PORT OF REGISTRY	Panama
HOME PORTS	Aberdeen (UK), Gdynia (Poland), Den Helder (the Netherlands)

Dimensions

LENGTH	60,00 m
BREADTH	15,60 m
DRAFT (MIN. / MAX.)	3,50 m / 5,00 m
DEPTH	6,00 m
GROSS TONNAGE	2082 T
NETT TONNAGE	591 T
DEADWEIGHT	1413 T

Performance

MAX. SPEED + FUEL CONSUMPTION	11.0 Knots - 9 T / day
ECO. SPEED + FUEL CONSUMPTION	9.0 Knots - 7 T / day
DP ACTIVITIES	5 T / day
FUEL CONSUMPTION SURVEY	4 Knots - 4.5 T / day
FUEL CONSUMPTION PORT	1 T / day

Remote Operations Enablement

V-SAT	2x Intellian V100NX antennas
NEWTEC DIALOG LINK	MIR:10/10Mbps CIR:5/5Mbps (Download/Upload)
STARLINK PREMIUM MARITIME	Download 100-380Mbps, Upload 30-40Mbps

Machinery and Propulsion

MAIN ENGINES	2x ABC 6MDZC-1000-150-A 1400 kW
AZIMUTH THRUSTER	2x Schottel SRP 1012 CP R/R 1,200 kW
BOW-THRUSTER	3x HRP 4009 TT CP 400 kW
MAIN GENERATORS	4x Leroy Somer LSAM 47,2 VS2 C 6/4 320 kW - 440V
AUXILIARY GENERATORS	2x Stamford HCH 634 Y2 625 kW - 440V (Shaft Generator)
EMERGENCY GENERATOR	1x Leroy Somer LSA M 43,2L65 C6/4 60 kW - 440V

Tank Capacities and Deck Area

FRESH WATER	434,7 m ³
BALLAST WATER	187,3 m ³
FUEL TANK	643 m ³
DECK AREA	377 m ² @ 5 T / m ² Mezzanine Deck 120 m ² at 5 T / m ² Deck Cargo: 300 T at 0,9 m above deck
ANTIHEELING	226 m ³ - 150 m ³ / h

Deck Equipment

DECK AIR SUPPLY	7.5 Bar
DECK POWER SUPPLY	Current: 2x 400kW - 440V
DECK CRANE	1x GHE Crane 1x AHA-2T11M-HBT-00
SAFE WORKING LOAD	GHE: 6 T at 12 m
SAFE WORKING LOAD	AHA: 3 T at 2,5-4 m / 2 T at 11 m
PEDESTAL (OPTIONAL)	For 24T Crane
FIFI	Class 1
STERN A-FRAME	45 T
STARBOARD A-FRAME	9.5 T

Survey Moonpool Area

SURVEY MOONPOOL	2x 200 mm
-----------------	-----------





Accommodation

BERTHS	58
CABINS	31
SINGLE CABINS	4
DOUBLE CABINS	27
OFFICES	5
HOSPITAL	1
GYM	Yes
RELAXATION ROOM	Yes



Rescue Equipment

DAVIT PS	Noreq - NPDS3500H
SAFE WORKING LOAD	3200 kg
STEEL WIRE	16 mm / 27 m
WORKING LOAD LIMIT	4,60 T
FAST RESCUE CRAFT	Noreq - FRB 650 (Diesel Waterjet)

Radio and Navigation Equipment

COMPASS	3x Gyro Compass Anschutz - 22NX 1x Magnetic Compass Cassens & Plath - Type 11
RADAR	2x Furuno - FAR/2117 1x JRC NWZ-173 Radar
GMDSS	A1 + A2 + A3
ECDIS	1x System at Forward Bridge Console - Furuno / FMD100 1x System at Mid Bridge Console - Furuno / FMD100
EPIRB	Tron 60/GPS
SART	Tron SART20
AIS	Sailor 6280

Dynamic Positioning System

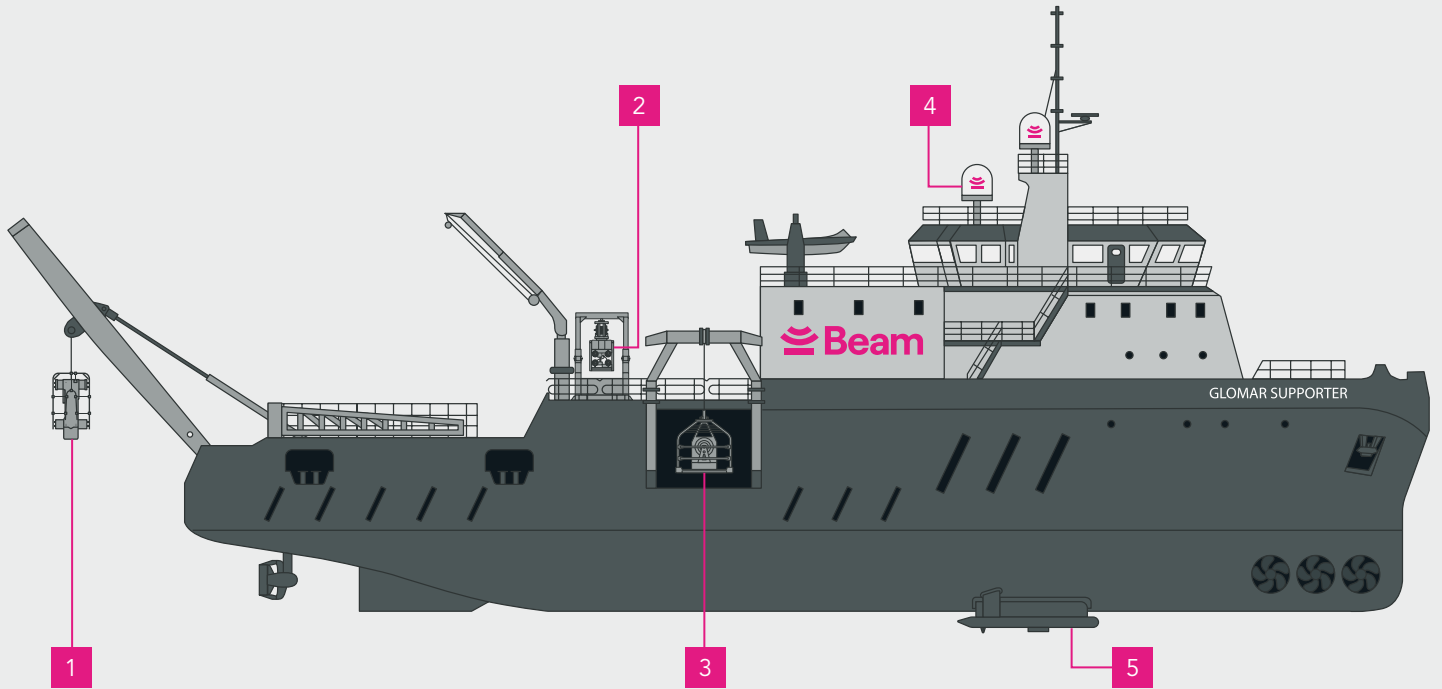
DP TYPE	DP2
MANUFACTURER	Kongsberg Kpos 21 - New Version
DGPS	2x Novatel PwrPak7
GYRO'S	3x Anschutz Gyro Compass 22NX
MOTION SENSORS	2x SG-Brown TSS
FANBEAM	Fanbeam 4.2 MDL
ACCOUSTIC POSITIONING	1x Ranger 2 System 1x Tilted Sonardyne Ranger 2 2x Ranger 2 Control Computer's
TAUT WIRE	Kongsberg / Bandak - LTW MK14

Survey Equipment

PRIMARY GNSS & INS	Applanix POS MV Oceanmaster w/ Trimble RTX corrections
SECONDARY GNSS	Trimble R750 w/ Fugro Marinestar corrections
PRIMARY HEADING AND MOTION	Applanix POS MV Oceanmaster w/ Trimble RTX corrections
SECONDARY HEADING AND MOTION	iXblue Octans V AHRS
USBL SYSTEM	Sonardyne Ranger 2
USBL BEACONS	Sonardyne WSM6+
SSS SYSTEM	Edgetech 4205 tri-frequency 230/540/850 kHz
MAG SYSTEM	Geometrix G882 magnetometer
2D-UHR SYSTEM	Duraspark 400 sparker system and 32-channel LH-16 GeoEel Digital Gel streamer



Glomar Supporter General Arrangement



1 Equipped to deploy towed sensors such as SSS, ROTV or 2D-UHR.



2 Work-Class ROV, enabling detailed surveys of areas of interest such as inspection of cable crossings, or archaeological surveys. Deployment with Pilot Assist/RPL following capability.



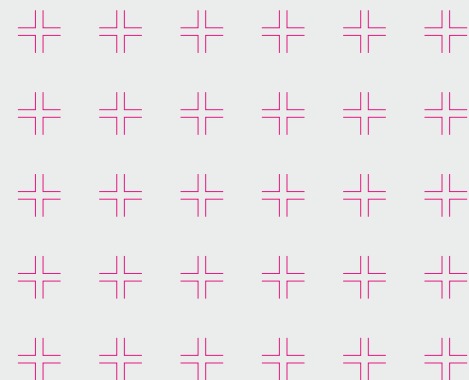
3 CPT launch for reliable, versatile and efficient sampling of in-situ soil conditions.



4 Dedicated data link enables fast comms to shore for reporting efficiency via data platform and remote ops.



5 Hull mounted survey sensors enable high quality, repeatable MBES (2x R2sonic 2026) and SBP (1x Innomar Medium-100) data collection.





Seaeye Leopard WROV - 1703

WEIGHT IN AIR	1200 kg
DIMENSIONS LxWxH	215 x 116 x 117.4 cm
DEPTH RATING	1000msw
PAYLOAD	200 kg (105 kg after manipulators fitted)
SPEED	> 3.5 knots *
THRUST	
Forward	493 kgf
Lateral	377 kgf
Vertical	225 kgf
PROPULSION	3x Vertical SM9-7, 500v brushless thrusters 8x Vectored Horizontal SM9-7, 500v brushless thrusters

Equipment

Standard

- Manipulator
 - Schilling Orion 7 function position-controlled
 - Schilling Orion 4 function rate controlled
- 4.5kW Manipulator HPU
- 20kW Tooling HPU
- Workhorse Navigator DVL
- Gemini 1200ik Imaging Sonar
- Emergency strobe
- GR29 Subsea grinder c/w assorted cutting discs
- 12.5" cleaning brush
- Lateral flexiclean subsea cleaning tool
- DS inspection tool
- Digital edge pro 4K DVR
- Dynaset HPW200 Water Jetting Spread
- Marine Growth Probe

Optional

- HP Water Jet
- Zip Jet Pump
- Cutting Tools
- Torque Tools
- Hot Stabs
- Wheeled pipeline skid with boom arms
- Other custom tooling skids available
- Sonar system (obstacle avoidance, side-scan, multibeam, profiling)
- Scientific equipment (bathy, CTD, etc)
- Tracking system
- Contact CP Probe
- Tooling motor
- Auxiliary connections (RS485/RS232/ Ethernet)



Gondola Survey Equipment

MBES SYSTEM	Dual head R2Soinc 2026, pitch and roll stabilised beams, 0.45° x 0.45° beam-width, 2048 soundings per ping
SBP SYSTEM	Innomar Medium-100
GONDOLA SV SENSORS	Valeport miniSVS-P

